

Selection of Containment Equipment



The purpose of containment Equipment

- Reduced the risk of fire
- Protected personnel and facilities
- Identify, organize, and segregate dangerous liquids



- Compliance with regulations
- Improved efficiency
- Improved company image

Types of Containment Equipment

- **Safety cabinets** - Storage of flammable, combustible, corrosive & pesticides
- **Safety containers**
 - Safety contain hazardous liquids and control vapors to reduce the risk of fire, protecting personnel and facilities
- **Utility products**
 - Make cleaning parts and sub-assemblies with flammables and solvent safer, easier and more efficient
- **Containment Systems**
 - Protects against our water contamination. And keep peronnel safe from accidental slips due to leaks and spills

SAFETY CONTAINMENT SYSTEM



Leading Brand for Environmental Protection and Employee Safety Products / Safety Containment Systems **SCS**



18Ga(1-mm) high quality welded steel

Adjustable shelves with anti-leakage design

Shelf bracket welded on both sides of cabinet

Unleaded coating with polish surface, which is corrosion and moisture proof

FM Certification

Fireproofing vents to effectively reduce the concentration of volatile substances, and prevent fire hazards. Special spill-proof shelves to avoid chemical leakage by accident.

Double fireproof steel panel and the insulate temperature space between the 2 panel is 38mm

The cabinet has three-point linkage lock, and the door can open 180°

5.3cm sump to prevent spill

Safety locking devices, in line with Hazardous Chemicals Control Ordinance (December 1st, 2011 Version)



It has acquired FM & CE Certification and is in strict comply with FM Approval Standard for Storage Cabinets (Flammable and Combustible Liquids) Class Number 6050, OSHA 29 CFR 1910.106 of American Occupational Safety and Health Administration, NFPA CODE30 of American National Fire Protection Association and Hazardous Chemicals Control Ordinance of State Bureau of Safe Production Supervision and Administration



Adjustable shelves: adjustable among every 6.5cm floor which can make full use of space



SYSTEX Three-point linkage lock: make lock safer; Flush paddle handle offers easy operation and save space



Fireproofing ventilation hole: at both sides of the cabinet, one on the top and the other on the bottom



Safety locking devices in line with Hazardous Chemicals Control Ordinance (December 1st, 2011 Version)



The three-point bullets: anti-static design structure



FM Approved Anti-Static Device: conductor grip combine the equipment with the cabinet to conduct the static to earth, thus to prevent fire accident

[1] Please refer to List of Hazardous Goods (GB 12268) and List of Hazardous Chemicals of SA WS (State Administration of work safety, 2002 edition)

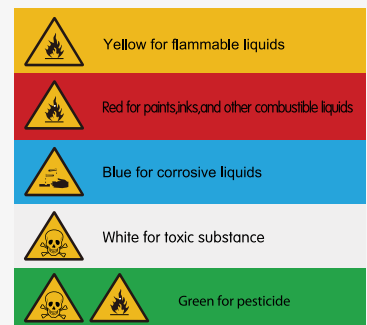
* OSHA CODE 29 CFR 1910.106 specifies that for in Class 1, 2 and 3, flammable liquids the cabinet should hold less than 60 Gal.

Chemical Properties

Conform the Chemical properties of the chemicals to be installed

↑ Color management + ↑ Label management = ↑ Identifiability

Color management and label management helps you to identify, manage and distinguish between a variety of dangerous chemicals in the storage process. According to the Material Safety Data Sheets (MSDS) of chemicals planned to be stored, you can determine their chemical characteristics and storage requirements, choose corresponding categories of safety storage cabinets in color and label management system, classify and grade chemicals, to avoid the risk of fires, gas reaction and explosion due to incompatible chemical storage.



In line with the US industrial tradition:



Types of Chemical Safety Cabinets

In storing chemicals, colors and labels are generally used for identify different chemicals, so if fires occur, it is easy for firemen to indentify hazardous chemicals.

<p>Flammable Cabinets</p> <p>Yellow Safety Cabinet for storing flammable liquids (low and median flash point liquid¹ flash point < 37.8 °C)</p>	<p>Combustible Cabinets</p> <p>Red Safety Cabinet for storing paintings, oil and other flammable liquids (high flash point liquid², flash point ≥ 37.8 °C)</p>	<p>Corrosive Cabinets</p> <p>Blue Safety Cabinet for storing corrosive liquids³</p>	<p>Toxic Cabinets</p> <p>White Safety Cabinet for storing toxic chemicals</p>	<p>Pesticides Cabinets</p> <p>Green Safety Cabinet for storing insecticides, pesticides, disinfectors and other chemicals</p>	<p>Polyethylene Corrosive Cabinets</p> <p>Polyethylene Corrosive Cabinet for storing strong polyethylene or corrosive chemicals</p>

Flammable Cabinets

Volume (Gal/L)	Certification	Door type	Ext dimension (H×W×D/cm)	Packing dimension (H×W×D/cm)	Adjustable Shelves (Pcs)	Shelf Loading Weight(Kgs.)	N.W. (Kgs.)	G.W. (Kgs.)	Yellow Model	Red Model	Blue Model	White Model
4/15	CE	Single Door/ Manual	56x43x43	56x43x43	1	50	27.3	35	WA810040	WA810040R	WA810040B	—
10/38	CE	Single Door/ Manual	64x59x60	82x69x69	1	50	34	48	WA810100	—	—	—
12/45	FM CE	Single Door/ Manual	89x59x46	108x70x57	1	50	44.6	56	WA810120	WA810120R	—	WA810120W
22/83	FM CE	Single Door/ Manual	165x60x46	182x70x57	3	50	74.3	90	WA810220	—	—	—
30/114	FM CE	Double Door/ Manual	112x109x46	130x120x57	1	100	86.2	102	WA810300	WA810300R	WA810300B	—
45/170	FM CE	Double Door/ Manual	165x109x46	182x120x57	2	100	114	133	WA810450	WA810450R	WA810450B	WA810450W
54/204	FM CE	Single Door/ Manual	165x60x87	184x70x97	3	100	120.3	140	WA810540	—	—	—
55/207	CE	Double Door/ Manual	165x86x86	182x96x96	1	100	154.8	179	WA810550	—	—	—
60/227	FM CE	Double Door/ Manual	165x86x86	182x96x96	2	100	144.2	166	WA810600	WA810600R	—	—
90/340	FM CE	Double doors/ Manual	165x109x86	182x120x96	2	100	164.2	186	WA810860	WA810860R	WA810860B	—
110/415	CE	Double Door/ Manual	165x150x86	182x162x98	1	100	228.6	271	WA811100	—	—	—
115/434	CE	Double Door/ Manual	165x150x86	182x162x98	2 (Left) 1 (Right)	100	227.6	270	WA810115	—	—	—

SAFETY CONTAINMENT SYSTEM

Leading Brand for Environmental Protection and Employee Safety Products / Safety Containment Systems **SCS**



Polyethylene Corrosive Cabinet

One-piece construction forming polyethylene corrosive cabinet provide maximum safety storage protection for storing harsh acids or corrosive chemicals

SYSBEL Polyethylene corrosive cabinet, with seamless structure, ensure almost no leakage, and excellent performance of corrosion resistance and secondary leakage prevention and control. Double padlocks help to achieve double-person lock management, which is in line with EPA264.175 of the U.S. EPA, OSHA29CFR1910.1450 of the U.S. OSHA and Chinese Management of Hazardous Chemicals Ordinance (December 1, 2011 edition). On the cabinet doors, there are acidic and corrosive chemical warning labels to give your chemical storage management double guarantee.



It is CE approved, in line with EPA264.175 of EPA and OSHA29CFR1910.1450 of OSHA as well as Hazardous Chemicals Control Ordinance of SAWS.

Countertop Single Door Polyethylene Corrosive Cabinet ACP80001

4 Gal storage capacity; all-plastic and no-stopper design, excellent corrosion resistance; the cabinet shelf can be removed according to needs to improve space utilization; both sides of door can be hinged and door can be opened on both sides, to fully use table space; on both sides of cabinet, there are two vents, can open the lid for ventilation or discharge of pressure gas when necessary; double padlock design to meet the requirements for double-person lock management. The product is CE certified.

Undercounter Double Door Polyethylene Corrosive Cabinet ACP80002

22 Gal storage capacity; all-plastic and no magnetic door holder design, excellent corrosion resistance; cabinet shelves can be removed according to needs to improve space utilization; on both sides of cabinet, there are two vents, can open the lid for ventilation or discharge of pressure gas when necessary; double padlock design to meet the requirements for double-person lock management. The product is CE certified.



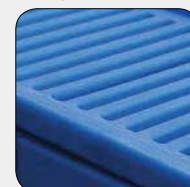
ACP80001



ACP80002



Double padlock to achieve double-person lock management, to provide a higher level of security (padlock is on optional part)



Special design of cabinet top, which can also be used as a worktable



Two vents on both sides of the cabinet, with removable lids for ventilation or discharge of pressure gas when necessary



On the door, there are warning labels to remind people to watch out



No magnetic door holder and excellent in corrosion resistance



Cabinet shelves can be removed to enhance space utilization



Both sides of ACP80001 doors can be hinged, and the door can be opened from the right side

Polyethylene Corrosive Cabinets

Volume (Gal/L)	Number of Doors and Style	Ext dimension (H×W×D/cm)	Ext dimension (H×W×D/cm)	Adjustable Shelves (Pcs)	Volume of Bottom Leakage(Gal/L)	Shelf Loading Weight(Kgs)	G.W. (Kgs.)	Model
4/15	One/Desktop	49×41×36	51×43×40	1	1.79/6.8	20	8.8	ACP80001
22/83	Two/Undercounter	89×90.5×54.4	91×93×58	4	3.17/12	20	35.5	ACP80002

Product Supporting Parts

Name of Part	For the Type of Cabinet	Packing dimension (H×W×D/cm)	Model
Poly Shelf	ACP80001	3×38.8×30	ACPL001
Poly Shelf	ACP80002	3×48×43	ACPL002

* Tips: When strong corrosive chemicals in the storage cabinets leak, the leaked chemical liquids will flow to the sump at the bottom of cabinets. Please use adsorbents and other spill control products to remove spills timely under the guidance of professionals.

[1] Please refer to List of Hazardous Goods (GB 12268-90) and List of Hazardous Chemicals of SAWS (OSHA Code 29CFR 1910.106 2002 edition).



OSHA®
Comply with OSHA29
CFR910.106&1910.144 of OSHA

SYSBEL Oily Waste Cans

A good helper for you to connect oily trashes!

In order to prevent fire risks and collect rags and cloth submersed in oil (flammable solvents, linseed oil and other flammable liquids), please use OSHA standard oily waste can. SYSBEL oily waste can has special lid whose opening angle is no more than 60°. The self-closing lid design ensures the can tightly closed in the absence of external force, to effectively control the three elements of fires*.

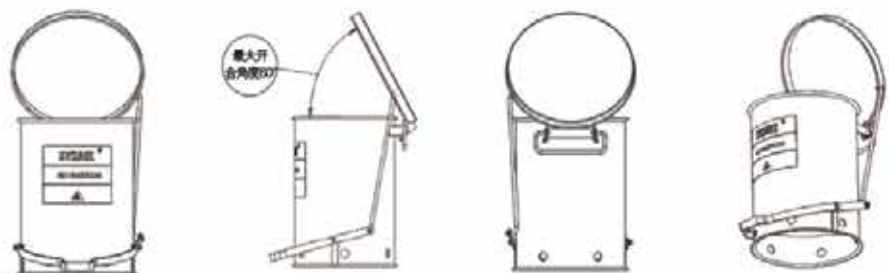
The oily waste can plays an important role!

1. Pedal switch control, requiring no manual operation
2. Unique body and base design of the can to effectively reduce the possibility of fire
3. Maximum lid opening angle is 60°, in accordance with Underwriters Laboratories (UL) safety standards
4. Scope: Red products for tarnish flammable liquid waste; yellow for tarnish combustible liquid waste



SYSBEL Oily Waste Cans

Capacity (Gal/L)	Ext Dimensions (HxD/cm)	Packing Dimensions (HxWxD/cm)	N.W. (kgs.)	G.W. (kgs.)	Red Model
6/22.6	40x30	46x42x42	4.5	6	WA8109100
10/38	46x35	52x47x47	6	7.5	WA8109300
14/52.9	51x41	58x51x51	7.5	9	WA8109500
21/79.3	60x47	66x56x56	11	12	WA8109700



Type	For Type
Red Oily Waste Can	Flashing point ≤ 80° F (27°C) Trash immersed in flammable liquids

SAFETY CONTAINMENT SYSTEM



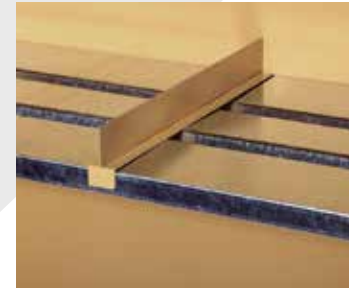
Safety Cabinet Parts



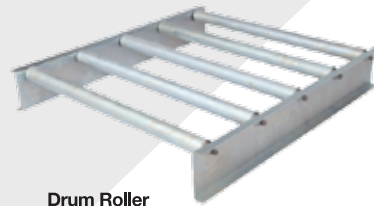
Shelf



Shelf Divider



Drum Ramp



Drum Roller



PVC Tray



Safety Cabinet Supporting Parts

Type	Name of part	For the type of Cabinet	Ext. Dimensions (HxWxD/cm)	G.W. (Kgs.)	Model	Functions
Shelve	Galvanized Steel Shelf	4 Gal	3x33x33	1.4	WAL040	More storage area divisions for diversified needs
	Galvanized Steel Shelf	12 Gal	3x49.5x35.5	2.4	WLA012	
	Galvanized Steel Shelf	30/45 Gal	3x100x36	5.4	WAL03045	
	Galvanized Steel Shelf	60 Gal	3x76.3x76.3	7.8	WAL060	
	Galvanized Steel Shelf	90 Gal	3x100x76.3	9.7	WAL090	
PVC Trays	PVC Tray	4 Gal Corrosive Cabinet	2x37x33	0.24	WAP040	Use with blue steel safety cabinet to provide extra spill protection
	PVC Tray	30 & 45 Gal Corrosive Cabinets	2x36x100	0.70	WAP03045	
Drum Roller	Oily Drum Safety Cabinets Roller	55/110/115 Gal	11.5x75x68	22.9	WADR001	Supporting storage for oily and chemical drums
Drum Ramp	Oily Drum Safety Cabinets Ramp	55/110/115 Gal	11.5x75x68	8.6	WAR001	Special tread design to increase friction, convenient for oily drum cart loading and unloading operations
Ground Connection	Antistatic Earth Lead	Steel Safety Cabinets	2mm, Length 1.5m	0.2	WA001	Promptly eliminate electrostatic changes, to prevent static sparks

Type	Name of part	For the type of cabinet	Ext Dimensions (HxWxD/cm)	Model	Functions
Shelf Divider	Safety Cabinet Shelf Divider 4G	4 Gal	6x3x33,4	WASD0040	Extend cabinet functions to enhance its performance
	Safety Cabinet Shelf Divider 12G	12 Gal	6x3x35.9	WASD0012	
	Safety Cabinet Shelf Divider 30 & 45G	30/45 Gal	6x3x36	WASD3045	
	Safety Cabinet Shelf Divider 60G	60 Gal	6x3x76.7	WASD0060	
	Safety Cabinet Shelf Divider 90G	90 Gal	6x3x76.7	WASD0090	



Why Do I Need a Safety Cabinet?

One of the leading causes of industrial fires is the improper storage and handling of flammable liquids. Safety cabinets help you safely store fuels, chemicals, and solvents to reduce the risk of fire and protect your people and property.

Safety cabinets serve critical functions:

- Improve awareness—high-visibility cabinet color and prominent labeling identify potentially hazardous chemicals
- Keep dangerous liquids safely organized and segregated
- Ensure safe evacuation time in the event of a fire
- Provide compliance with federal OSHA regulations and the National Fire Protection Association
- Increase maximum allowable quantities of flammable and combustible liquids in control areas
- Improve efficiency by locating materials near point-of-use
- Improve security with locking mechanism



Considerations when selecting a safety cabinet

- Federal, state, and local compliance requirements
- Size and type of container being stored
- Capacity needed
- Type of chemical being stored
- Security and safety features such as U-Loc™ padlockable handle, Spillslope® shelves, Haz-Alert™ warning labels, all welded construction

Also look for cabinets that carry independent, third party certification from FM Approvals (FM-approved) or MPA Dresden (GS). These marks signify the cabinet will perform as expected and support property loss prevention.



While regulatory codes do not mandate the specific color for a safety cabinet, industry has customarily observed certain colors for defined liquids.

Yellow for flammable liquids	Green for pesticides and insecticides
Red for paints, inks, and other combustible liquids	Silver or neutral colors for laboratory settings
Blue for corrosives and hazardous liquids	White, beige or gray for waste or outdoor lockers

Regulations do, however, specify construction details and the type of door style required

Code	Flammable Safety Cabinet Door Styles
NFPA 30 and NFPA 1, 2012 ed	Permits either manual or self-close doors
IFC	Mandates use of self-close doors only
NFPA 400	Mandates use of self-close doors only

Contact local jurisdictions for specific requirements.

Compliance

Each Justrite steel safety cabinet meets at least one or more of the following regulations:

- OSHA 1910.106
- National Fire Protection Association (NFPA) Flammable Liquid Code 30
- NFPA Fire Code 1
- International Fire Code (IFC)
- National Fire Code of Canada
- NFPA Hazardous Materials Code 400
- European EN standard 14470-1 and 14727



Most cabinets are FM approved and all are backed by an industry-first, ten-year warranty.

SAFETY CONTAINMENT SYSTEM



Justrite® Sure-Grip® EX Safety Storage Cabinets offer top performance for flammable liquid storage and protection EXtra safe, EXtra sturdy, EXtra secure

Fusible links hold doors wide open and melt at 165°F (74°C) for automatic closure (on self-closing models)

Sturdy 18-gauge (1-mm) double wall steel construction with 1-1/2-in (38-mm) of insulating air space

Easy-close, self-latching doors; U-Loc™ handle (shown below) does not require manual rotation to engage mandatory three-point latch

Fully welded, not riveted, construction holds squareness for longer life and offers greater protection in a fire since air gaps are reduced

Continuous piano hinge provides smooth closure

Durable and chemical-resistant, lead-free powder-coat paint finish, inside and out, retains high gloss look and minimizes the effects of corrosion and humidity

Dual vents with built-in flash arresters strategically placed at bottom and opposite top



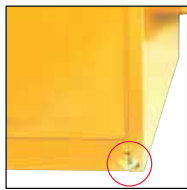
Concealed self-close mechanism provides obstruction-free access to top shelf space. Self-indexing doors guarantee they will close in sequence and ensure a tight closure from top to bottom (on self-closing models). Patent pending

Patented SpillSlope® safety shelves direct spills to back and bottom of leakproof sump. Adjustable on 3-in (76-mm) centers, they meet ANSI standards with a 350-lb (159-kg) safe allowable load.

Welded shelf hangers interlock with shelf to offer maximum "nonslip" stability with no filmy brackets to lose

2-in (51-mm) leakproof containment sump holds leaks and meets EPA requirements.

45-gallon (170-liter) self-close door style



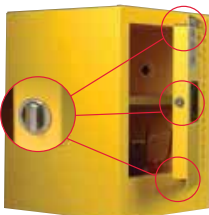
Adjustable leveling feet make it easy to balance cabinets on uneven surfaces.



Built-in grounding connector (on outside side panel) for easy grounding. Shown here with optional ground wire 08500.



Complies with OSHA 29 CFR 1910.106 and NFPA Code 30, section 9.5.3; FM Approved



Stainless steel, 3-point bullet self-latching system provides easy, fail-safe, positive door closure with increased heat resistance
Patent pending



Easily secure your contents—U-Loc™ handle includes double key set or can be padlocked (not included) for greater security. Patent pending



Patented SpillSlope® safety shelves direct spills to back and bottom of leakproof sump; adjust on 3-in (76-mm) centers for versatile storage
Meets ANSI MH28.1



Welded construction holds squareness for long life; door astragal provides extra sturdiness



Highly visible HazAlert™ reflective label provides warning—"Flammable – Keep Fire Away" in English, Spanish, and French



Using multiple cabinets helps you organize and segregate dangerous liquids.

Sure-Grip® EX Classic Safety Cabinets

Safe, dependable flammable liquid storage and protection

- **Independently fire tested and approved by FM Approvals.**
- **Avoid fines—meet regulations, fire codes, and insurance requirements.**

Protect workers, reduce fire risks, and improve productivity by storing flammable fuels and chemicals in code-compliant safety cabinets. Designed to meet OSHA and NFPA 30 standards, Sure-Grip® EX cabinets are constructed of sturdy 18-gauge (1-mm) thick double-wall, welded steel with 1-1/2-in (38-mm) of insulating air space for fire resistance. High-performance, self-latching doors close easily and securely for maximum protection under fire conditions. Fail-safe closing mechanism ensures three-point stainless steel bullet latching system works every time.

For added security, U-Loc™ handle comes with a cylinder lock and key set or accepts an optional padlock.

Haz-Alert™ reflective warning labels are highly visible under fire conditions or during power outages when illuminated with a flashlight.

Patented SpillSlope® galvanized steel shelves direct spills to back and bottom of a leakproof sump. They adjust on 3-in (76-mm) centers for versatile storage. Cabinets also feature a leakproof 2-in (51-mm) bottom sump, dual vents with flame arresters, four adjustable self-leveling feet, grounding connector and trilingual warning label. Durable lead-free epoxy/polyester powder-coat finish provides excellent chemical resistance.

All cabinets are FM-approved and come with a ten-year warranty.

Self-closing models also meet NFPA 1 and the International Fire Code. They shut and latch automatically when a fusible link melts at 165°F (74°C) under fire conditions. Unique, concealed self-closing mechanism offers obstruction-free access to contents.



894500



894520



893000



896000

Capacity Gallons/Liters	Number of Doors and Style	Dimensions H x W x D		Adjustable Shelves	Approv/Lstg Regulation	Sure-Grip® Model No	Ship Wt lb/kg
		Exterior	Interior				
30/114	2 door, manual	44 x 43 x 18 in	39.625 x 39.5 x 14.562 in	1	FM,N,O,A	893000	231/105
	2 door, self-close	1118 x 1092 x 457 mm	1006 x 1003 x 370 mm		FM,N,O,A,I	893020	238/108
45/170	2 door, manual	65 x 43 x 18 in	60.5 x 39.5 x 14.562 in	2	FM,N,O,A	894500	311/141
	2 door, self-close	1651 x 1092 x 457 mm	1537 x 1003 x 370 mm		FM,N,O,A,I	894520	313/142
60/227	2 door, manual	65 x 34 x 34 in	60.5 x 30.75 x 30.34 in		FM,N,O,A	896000	388/176
	2 door, self-close	1651 x 864 x 864 mm	1537 x 781 x 771 mm		FM,N,O,A,I	896020	392/178
90/341*	2 door, manual	65 x 43 x 34 in	60.5 x 39.5 x 30.34 in	FM,N,O,A	899000	481/218	
	2 door, self-close	1651 x 1092 x 864 mm	1537 x 1003 x 771 mm	FM,N,O,A,I	899020		

*OSHA 29CFR 1910.106(d)(3) states that not more than 60 gallons (227L) of Category 1, 2, or 3 flammable liquids, nor more than 120 gallons (454L) of Category 4 flammable liquids may be stored in a safety cabinet.



Extra Accessories

Description	Fits Cabinet Styles	Dimensions W x D	Model No	Ship Wt lb/kg
SpillSlope® steel shelf	30 & 45 gallon (114 & 170 L) - 43 in W (1092 mm)	39.375 x 14 in (1000 x 356 mm)	29937	10/5
SpillSlope® steel shelf	30 gallon (114 L) - 36 in W (914 mm)	32.375 x 20 in (822 x 508 mm)	29942	12/5
SpillSlope® steel shelf	60 gallon (227 L) - 34 in W (864 mm)	30.375 x 29 in (771 x 737 mm)	29944	16/7
SpillSlope® steel shelf	90 gallon (341 L) - 43 in W (1092 mm)	39.375 x 29 in (1000 x 737 mm)	29945	21/9

SAFETY CONTAINMENT SYSTEM



Self-latching doors require a simple push to securely activate the three-point latch.

Sure-Grip® EX Safety Cabinets—Optional Colors Follow company-established color coding practices

Using color coding in your storage practices helps identify, organize, and segregate liquids. These cabinets in red, gray, and white have all the same safety benefits and high performance features found in Justrite's classic-style yellow cabinets for the storage of flammable fuels and chemicals



893001



893003



893005



10 Year
Limited Warranty

Capacity Gal/L	Number of Doors and Style	Dimensions H x W x D		Adjustable Shelves	Approv/Lstg Regulation	Red Model No	Gray Model No	White Model No	Ship Wt lb/kg
		Exterior	Interior						
30/114	2 door, manual	44 x 43 x 18 in	39.625 x 39.5 x 14.562 in	1	FM,N,O,A	893001	893003	893005	232/105
	2 door, self-close	1118 x 1092 x 457 mm	1006 x 1003 x 370 mm			893021	893023	893025	236/107
45/170	2 door, manual	35 x 36 x 24 in	30.625 x 32.625 x 21.75 in	2	FM,N,O,A	893301	893303	893305	213/97
	2 door, self-close	889 x 914 x 610 mm	778 x 829 x 552 mm			894501	894503	894505	299/136
60/227	2 door, manual	65 x 43 x 18 in	60.5 x 39.5 x 14.562 in	2	FM,N,O,A,I	894521	894523	894525	301/137
	2 door, self-close	1651 x 1092 x 457 mm	1537 x 1003 x 370 mm			896001	896003	896005	386/175
90/341*	2 door, manual	65 x 34 x 34 in	60.5 x 30.75 x 30.34 in	2	FM,N,O,A,I	896021	896023	896025	394/179
	2 door, self-close	1651 x 864 x 864 mm	1537 x 781 x 771 mm			899001	899003	899005	450/204
90/341*	2 door, manual	65 x 43 x 34 in	60.5 x 39.5 x 30.34 in	2	FM,N,O,A,I	899021	899023	899025	454/206
	2 door, self-close	1651 x 1092 x 864 mm	1537 x 1003 x 771 mm						

*OSHA 29CFR 1910.106(d)(3) states that not more than 60 gallons (227L) of Category 1, 2, or 3 flammable liquids, nor more than 120 gallons (454L) of Category 4 flammable liquids may be stored in a safety cabinet.

Sure-Grip® EX Safety Cabinets—Single Door Full size, full storage capacity safety cabinets with a unique single-door design

These cabinets have all the same features and benefits as Justrite's popular classic-style safety cabinets, with one convenient bi-fold, sliding door. Self latching and self closing, it is equipped with a fusible link to hold the door open during use and melts at 165°F (74°C) to automatically close under fire conditions. Heavy-duty steel dual-track guidance system at top and bottom ensures smooth closure. Industrial-strength spring-loaded piano hinge provides long lasting operation.



893080



10 Year
Limited Warranty

Capacity Gal/L	Number of Doors and Style	Dimensions H x W x D		Adj Shelves	Approv/Lstg Regulation	Yellow Model No	Red Model No	Gray Model No	White Model No	Ship Wt lb/kg
		Exterior	Interior							
30/114	1 bi-fold sliding self-close	44 x 43 x 18 in	39.625 x 39.5 x 14.562 in	1	FM,N,O,A,I	893080	—	—	—	246/116
45/170	1 bi-fold sliding, self-close	65 x 43 x 18 in	60.5 x 39.5 x 14.562 in	2		894580	894581	—	—	320/145
		1651 x 1092 x 457 mm	1537 x 1003 x 370 mm			896080	896081	—	—	394/179
90/341*	1 bi-fold sliding, self-close	65 x 34 x 34 in	60.5 x 30.75 x 30.34 in	2		899080	—	—	—	454/206
90/341*	1 bi-fold sliding, self-close	65 x 43 x 34 in	60.5 x 39.5 x 30.34 in	2						
		1651 x 1092 x 864 mm	1537 x 1003 x 771 mm							

*OSHA 29CFR 1910.106(d)(3) states that not more than 60 gallons (227L) of Category 1, 2, or 3 flammable liquids, nor more than 120 gallons (454L) of Category 4 flammable liquids may be stored in a safety cabinet.



Place Slimline cabinet where floor space is limited.

Sure-Grip® EX Slimline Safety Cabinets

Gain valuable storage space even when floor space is tight

- Welded, 18-gauge (1-mm) steel double wall with 1-1/2-in (38-mm) insulating air space
- U-Loc™ handle comes with double key set and accepts optional padlock for added security

Fully compliant cabinets with compact design feature fire-resistant construction for the safe storage of flammable and combustible liquids.

Use alone or alongside larger safety cabinets for expanded storage when floor space is limited. The standard Slimline cabinet is 18-in (457-mm) deep and fits flush alongside a 45-gallon (170-L) cabinet. The deep Slimline cabinet is 34-in (864-mm) deep and fits alongside a 60- or 90-gallon (227- or 341-L) cabinet.



Use color coding in your storage practices to organize and segregate liquids.

Both cabinets measure only 23-1/4-in (591-mm) wide.

Slimline safety cabinets have all the same features as the larger safety cabinets including, a three-point, self-latching door with self-latching handle, a 2-in (51-mm) leakproof sump, and dual vents with integral flame arrester. Built-in grounding connector allows for proper grounding to reduce static build-up. Cabinets include three SpillSlop® galvanized steel shelves that direct spills to back and bottom into a 2-in (51-mm) leakproof sump. Under fire conditions when illuminated by a flashlight, highly reflective Haz-Alert™ warning labels shine brightly to alert emergency personnel to volatile contents.

Cabinets meet NFPA and OSHA regulations and are FM-approved. Self-closing models also comply with the International Fire Code.



892200

895400



Small cabinet footprint fits in the tightest spaces.



When additional storage space is needed, modular size fits nicely alongside existing cabinets.



Capacity Gal/L	Number of Doors and Style	Dimensions H x W x D		Adj Shelves	Approv/Lstg Regulation	Yellow Model No	Red Model No	Gray Model No	White Model No	Ship Wt lb/kg
		Exterior	Interior							
22/83 (standard)	1 door, manual	65 x 23.25 x 18 in	60.5 x 20 x 14.56 in	3	FM,N,O,A	892200	892201	892203	892205	208/94
	1 door, self-close	1651 x 591 x 457 mm	1537 x 508 x 370 mm		FM,N,O,A,I	892220	892221	892223	892225	210/95
54/204 (deep)	1 door, manual	65 x 23.25 x 34 in	60.5 x 20 x 30.34 in		FM,N,O,A	895400	895401	895403	895405	298/135
	1 door, self-close	1651 x 591 x 864 mm	1537 x 508 x 771 mm		FM,N,O,A,I	895420	895421	895423	895425	314/142

Extra Accessories

Description	Fits Cabinet Styles	Dimensions W x D	Model No	Ship Wt lb/kg
SpillSlop® steel shelf	22 Gallon (83 L) Slimline	19.625 x 14 in (498 x 356 mm)	29936	6/3
SpillSlop® steel shelf	54 Gallon (204 L) Deep slimline	19.625 x 29 in (498 x 737 mm)	29941	11/5

SAFETY CONTAINMENT SYSTEM



Sure-Grip® EX Piggyback Safety Cabinets

Expand storage and safely segregate liquids

- Easily add up to 17-gallons (64-L) of additional capacity to existing cabinets.
- *Fully compliant, fire-resistant design reduces the risk of fire.*

Create a safe storage area for fuels, chemicals, or solvents without taking up valuable floor space. Piggyback cabinets are designed to mount on top of 30- and 45-gallon (114- and 170-L), manual or self-closing Sure-Grip® EX cabinets. They can also be used independently as a benchtop cabinet or stacked to provide additional storage. Turn it into a wall-mount cabinet with optional wall hanger assembly No. 25950.

The Piggyback cabinets have a lower-height, but offer the same protection as Justrite's taller safety cabinets. Constructed of sturdy 18-gauge (1-mm) thick double-wall, welded steel, they feature 3-point, self-latching doors that close easily and securely for maximum protection under fire conditions. Leakproof 2-in (51-mm) captures dangerous spills. U-Loc™ handle includes double key set and accepts optional padlock for increased security.

Cabinets meet NFPA and OSHA regulations and are FM-approved. Self-closing models also comply with the International Fire Code.



Piggyback cabinets can be stacked on each other or taller cabinets for better organization of liquids.



891300 on top of 893000



Instant access to safety data sheets . . .

Document storage boxes keep important papers *clean, legible, and at employee's fingertips—*



891300

891700



Capacity Gal/L	Number of Doors and Style	Dimensions H x W x D		Adj Shelves	Approv/Lstg Regulation	Yellow Model No	Red Model No	Gray Model No	White Model No	Ship Wt lb/kg
		Exterior	Interior							
12/45	2 door, manual	18 x 43 x 18 in	13 x 39.5 x 14.56 in	0	FM,N,O,A	891300	891301	891303	891305	129/59
	2 door, self-close	457 x 1092 x 457 mm	330 x 1003 x 370 mm		FM,N,O,A,I	891320	891321	891323	891325	131/59
17/64	2 door, manual	24 x 43 x 18 in	19.5 x 39.5 x 14.56 in	1	FM,N,O,A	891700	891701	891703	891705	166/75
	2 door, self-close	610 x 1092 x 457 mm	495 x 1003 x 370 mm		FM,N,O,A,I	891720	891721	891723	891725	169/77

Extra Accessories				
Description	Fits Cabinet Styles	Dimensions W x D	Model No	Ship Wt lb/kg
SpillSlope® steel shelf	17 Gallon (64 L) piggyback	39.375 x 14 in (1000 x 356 mm)	29937	10/5
Wall hanger assembly (mounting kit)	12 & 17 Gallon (45 L & 64 L) piggyback cabinets	—	25950	5/2



Store harsh acids under a counter for safe, convenient access.

Polyethylene Acid Cabinets

One-piece construction provides excellent resistance to harsh acids and corrosives

These blue, hollow-bodied, polyethylene cabinets withstand highly corrosive acids and offer maximum protection against chemical corrosion and leaks. Both models are clearly labeled for ACID contents and accept a padlock (not included) for added security.

Countertop Cabinet stores up to two 1-quart (4-L) bottles. Door can be hinged from either side for best worktop space utilization. Polyethylene spill tray inside contains leaks and can be removed for easy cleaning. A separate polyethylene tray stores under the cabinet and can be used as a handy work tray.

Undercounter Cabinet holds up to thirty 1-quart (4-L) containers. Two segregated compartments each with an adjustable shelf let you store a variety of containers while recessed area in both doors hold small containers. Two removable sumps slide out for easy cleaning of incidental spills. Two vent holes (with removable caps) at rear accommodate pressurized vapor removal systems.



24160



24040



Compact design offers placement on lab counters for access to frequently used chemicals.

Capacity	Number of Doors and Style	Exterior Dimensions H x W x D	Adjustable Shelves	Model No	Ship Wt lb/kg
Two, 4-liter bottles	1 door, countertop	19.5 x 14.25 x 16.25 in 495 x 362 x 413 mm	–	24040	31/14
Thirty, 1-liter bottles	2 door, undercounter	35 x 36 x 23.5 in 889 x 914 x 597 mm	2	24160	130/59

SAFETY CONTAINMENT SYSTEM



Why Do I Need a Safety Can?

Almost every place of business has occasion to use flammable liquids such as fuels, chemicals, and solvents. Whereas these liquids are relatively commonplace, it's important to understand the dangers they may present. For example, one gallon of vaporized gasoline can explode with the same force as twenty sticks of dynamite. Safety containers protect workers by minimizing the risk of accidents and fires when handling hazardous liquids.



Safety cans serve critical functions:

- Reduce the risk of fire and explosion when pouring and storing flammable liquids
- Provide compliance with federal OSHA regulations and fire codes
- Improve efficiency with ease-of-use features which enhance pouring and filling operations

Types of Safety Containers

Safety containers come in a variety of types and sizes for different applications. All are designed to applicable codes and regulations and include safety features for worker protection.

- Type I and Type II steel safety cans
- D.O.T. (Department of Transportation) safety cans
- Polyethylene safety cans
- Laboratory safety cans
- Quick-disconnect safety disposal cans
- Liquid disposal safety cans
- Oily waste cans
- Plunger and bench cans
- Dip, wash, and rinse tanks

Safety Container Compliance

Justrite safety containers meet at least one or more of the following regulations:

- OSHA 1910.106
- National Fire Protection Association (NFPA) Code 30
- UN/D.O.T. 49 CFR parts 100 to 185
- National Fire Code of Canada
- NFPA Fire Code 1
- International Fire Code (IFC)
- California Air Resources Board (CARB) Title 13



Type I and Type II

D.O.T.

Polyethylene

Safety Container Approvals

Most safety containers carry independent, third party certification from one or more of the following:

- FM Approvals
- Underwriters Laboratories
- TÜV Technical Inspection Association



Laboratory



Quick-Disconnect Disposal



Liquid Disposal



Oily Waste



Plunger and Bench



Dip and Wash



Exclusive, vented Type II AccuFlow™ manifold with a Safe Squeeze® trigger handle provides the fastest smoothest, most controlled pouring. Patented.



Flexible 9-in (229-mm) hose on Type II AccuFlow™ offers targeted pouring into small openings.



Quick-fill port on Type II AccuFlow™ features an ergonomically designed lift lever that opens wide for easy filling.



Extra capacity in all cans accommodates oil additives for two cycle engines.



1/2-in (13-mm) grip lip along bottom supports pouring and resists accidental punctures when placed on uneven surfaces.



Stainless steel flame arrester stops flashback ignition. Long 3-1/2-in (88-mm) length offer safe secure insertion of gas nozzle.



Optional 2-position polypropylene funnel for Type I cans aids in pouring and folds down for compact storage and filling



Large ID zone permits user labeling to avoid misuse, mishaps with incompatible mixtures, or to identify owner or department.

Safety in a Can!

Comfortable, rounded handle doesn't cut into hand.

Leakproof, positive pressure relief lid automatically vents to prevent rupture or explosion. It is spring-loaded to self-close controlling vapors and spills.

Type II **AccuFlow™**



Type I

Trilingual warning label

Free swinging handle with counter-balanced design leverages the weight of the can against the opening mechanism for easy pouring and carrying.

Reinforcing ribs strengthen walls to resist denting or implosion.

Double lock seams at base and top offer four thicknesses of steel for extra "bumper guard" protection.



24-gauge galvanized steel body and handle finished in an environmentally friendly, tough powder-coat finish resists solvents and stands up to abuse.

100% leak tested

Fully compliant—meets OSHA and NFPA



SAFETY CONTAINMENT SYSTEM



Swinging, full-fisted rounded handle eases carrying.

Type I Safety Cans

Self-closing, leakproof lid provides safety from spills

Designed with a single spout for filling and pouring, the sealed lid features automatic positive-pressure relief that vents between 3 and 5 psig (0.2 and 0.35 bar) to guard against rupture or explosion.

Made from high-grade coated steel, each can is tested to guarantee 100% leakproof construction. The tough powder-coat finish resists chemicals and stands up to demands of rigorous use. Each Justrite safety can is equipped with a stainless steel flame arrester which dissipates heat to stop flashback ignition. Cans up to 1-quart (1-L) feature a trigger-release handle, while larger capacities have a swinging handle to greatly ease carrying of heavier loads. Large label ID zone on swing-handle cans provides writing space to identify contents, department location, or individual user name.

Certified by FM, UL/ULC, and TÜV, Justrite safety cans also meet OSHA and NFPA requirements, and come with a ten-year warranty.

Type I Safety Can Funnel

Used to pour into smaller openings, the polypropylene funnel attaches to the spout neck of Type I safety cans sized 1-gallon (4 L) and larger. The two-position funnel folds down for when you fill or store the can, and stays up for when you pour. Large rounded bowl provides protection from splashing and spillage. Durable construction holds up to heavy use.



Convenient hinged design allows you to fill the can without removing the funnel.



10001 10101 10301



7150100 7125100 7120100 7110100



Prevent static discharge when **transferring flammable liquids.**

Use antistatic wires to bond and ground containers

Description and Capacity	Dimensions OD x H	Approv/Lstg Regulation	Red Can Model No	Red Can with Funnel* Model No	Ship Wt lb/kg
Trigger Handle Type I Safety Cans					
1 pint (0.5 L) steel safety can	4.812 x 6.75 in 122 x 172 mm	FM, UL/ULC, TÜV	10001	—	2/1
1 quart (1 L) steel safety can	4.812 x 8.25 in 122 x 210 mm		10101		
1 gallon (4 L) steel safety can	7.25 x 11.5 in 184 x 292 mm	FM, UL/ULC	10301		4/2
Swinging Handle Type I Safety Cans					
1 gallon (4 L) steel safety can	9.5 x 11 in 241 x 279 mm	FM, UL/ULC, TÜV	7110100	7110110	4/2
2 gallon (7.5 L) steel safety can	9.5 x 13.75 in 241 x 349 mm		7120100	7120110	6/3
2.5 gallon (9.5 L) steel safety can	11.75 x 11.5 in 298 x 292 mm		7125100	7125110	
5 gallon (19 L) steel safety can	11.75 x 16.875 in 298 x 429 mm		7150100	7150110	8/4
Polypropylene funnel for 1 gallon (4L) and larger	0.5 x 11.25 in 13 x 286 mm	—	11202Y	—	2/1
Bolt-on funnel with galvanized hose for 1 gallon (4L) and larger	1 x 14 in 25 x 356 mm		11089		

*Approvals apply to safety can only, not funnel.



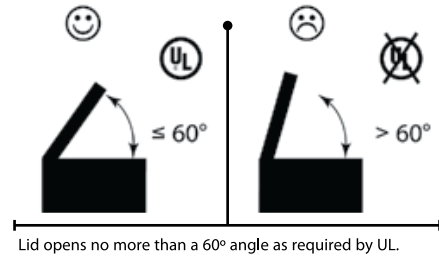


Oily Waste Cans

Dispose of oil-soaked rags and prevent fires caused by stray sparks or spontaneous combustion

Rags and cloths soaked with solvents, thinners, linseed oil, combustible adhesives and other flammable liquids present a serious fire risk when improperly discarded. Lid opens to no more than 60 degrees and stays closed when not in use, isolating contents from fire sources and limiting oxygen to virtually eliminate the risk of spontaneous combustion. Round construction and elevated base allow circulation of air around can to disperse heat and reduce moisture build-up and rusting. Durable steel construction with powder-coat finish provides chemical resistance. Approved by FM, UL, and TÜV. All cans carry a ten-year warranty.

Foot pedal provides hands-free opening. When released, cover self-closes to reduce oxygen source and prevent a fire from starting.



Lid opens no more than a 60° angle as required by UL.



Description and Nominal Gallon Capacity	Dimensions OD x H	Approv/Lstg Regulation	Red Model No		Ship Wt lb/kg
			Foot-Operated	Hand-Operated*	
2 gallon (8 L) oily waste can	9.625 x 9.125 in 244 x 232 mm	FM	—	09200	6/3
6 gallon (20 L) oily waste can	11.875 x 15.875 in 302 x 403 mm	FM,UL,TÜV	09100	09110	10/4
10 gallon (34 L) oily waste can	13.938 x 18.25 in 354 x 464 mm		09300	09310	13/6
14 gallon (52 L) oily waste can	16.063 x 20.25 in 408 x 514 mm		09500	09510	16/7
21 gallon (80 L) oily waste can	18.375 x 23.438 in 467 x 595 mm		09700	09710	22/10

*Hand-operated models do not have TÜV certification.

SAFETY CONTAINMENT SYSTEM



Efficiently wet wipes with a simple pump action.

Safety Plunger Cans

Moisten cleaning cloths quickly and easily-smart pump brings more liquid to the top and requires less time between refills

- Rugged 24-gauge steel cans with powder-coat finish for chemical resistance.
- High-density polyethylene container option for greater corrosion resistance.
- Approved by FM Approvals and TÜV.

Dispense flammable liquids and solvents safely, without waste or exposure. Made of chemically resistant Ryton® and brass, the pump base is designed to leave less liquid in the bottom before having to refill.



Perforated dasher dissipates heat.

Pushing down on the pump assembly fills the upper pan with liquid. Surplus liquid drains safely back into reservoir. The perforated upper pan serves as a flame arrester. Top rim has molded edge protector for smooth, trouble-free moistening.



Description and Capacity	Dasher Assembly	Smart-Pump Assembly	Dasher Dia	Dimension OD x H	Approv/Lstg Regulation	Red Model No	Yellow Model No	Ship Wt lb/kg
1 pint (0.5 L) steel plunger can	steel	brass & Ryton®	2.75 in (70 mm)	4.875 x 5.25 in 124 x 133 mm	FM, TÜV	10008	10018	1/1
1 quart (1 L) steel plunger can				7.25 x 5.625 in 184 x 143 mm		10108	10118	3/1
2 quart (2 L) steel plunger can				7.25 x 7.875 in 184 x 200 mm		10208	10218	
1 gallon (4 L) steel plunger can				7.25 x 10.5 in 184 x 267 mm		10308	10318	
1 quart (1 L) polyethylene plunger can	brass		5.5 x 8.25 in 140 x 210 mm			14018	-	2/1

Ryton® is a registered trademark of Chevron Phillips Chemical Company.

Safety Dispenser Cans

Safe, convenient way to release small amounts of liquid

Dispensing cans permit easy, one-hand dispensing of liquids directly onto work surface or into lab beaker. Leakproof, self-closing, brass dispenser valve minimizes spills and controls excess. FM-approved brass valves are ideal for use with flammables and controls excess. Textured, high-density polyethylene body provides a firm grip.



14010 / 14004

Description and Capacity	Dimension OD x H	Spout Opening ID	Approv/Lstg Regulation	Model No	Ship Wt lb/kg
4 ounce (0.12L) polyethylene dispenser can, translucent	2.25 x 5.5 in (57 x 140 mm)	0.25 in (6 mm)	FM	14002	1/1
8 ounce (0.24L) polyethylene dispenser can, red				14004	
8 ounce (0.24L) polyethylene dispenser can, translucent	3.125 x 5.5 in (79 x 140 mm)			14005	
1 quart (1L) polyethylene dispenser can, red				14010	
1 quart (1L) polyethylene dispenser can, translucent	4 x 10.5 in (102 x 267 mm)			14012	

SAFETY CONTAINMENT SYSTEM



So many superior features make the original Smoker's Cease - Fire® the best choice for cigarette butt disposal



Rainbonnet covered opening keeps rain out and discourages unwanted trash. Large head dissipates heat.



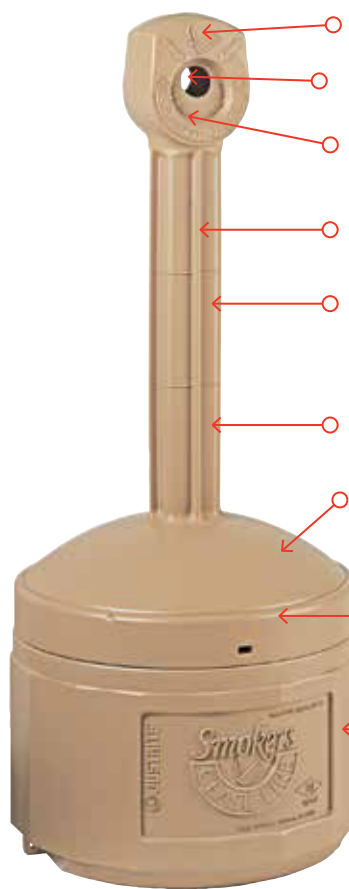
A patented internal drip-lip keeps messy tar condensation from escaping to help maintain a clean and neat appearance



Molded-in-tie-down notches on both sides provide security from theft or severe weather



Fire tested and approved by FM Global



- Molded-in graphics easily identify opening for cigarette butt disposal
- 1 1/2" (38mm) opening permits easy use and promotes good housekeeping
- Self-extinguishing design allows lit butts to be dropped in... or use available snuff spot
- Large internal neck cavity minimizes "clogging"
- Low maintenance, high density polyethylene construction with flame retardant additive won't rust, dent, crack or peel and resists fading
- Cease Fire® technology minimizes "chimney effect" found in other units
- Innovative Cease Fire® design limits the flow of oxygen to safely and quickly extinguish cigarettes to reduce the risk of fire
- Easy-open and easy-close, lid securely interlocks to prevent spills. Back thumb-screw easily connects top to bottom
- Large 4 gal. (15L) galvanized steel liner pail holds thousands of butts and removes for easy cleaning
- Broad 16 1/2" base for stability



Self-extinguishing is the secret!
All you have to do is drop in a lit cigarette and let Smoker's Cease Fire® take care of the rest. Its oxygen limiting design suffocates the lit cigarette to quickly put it out.

Easy maintenance!
Includes large galvanized steel pail with bail handle, making maintenance a snap! Simply lift off the top section and remove the bucket of emptying.



Original Smoker's Cease Fire® Cigarette Butt Receptacles									
Product Description	Dimensions	Capacity	Approx./Lstg. Regulation	Pewter Gray Model No.	Adobe Beige Model No.	Deco Black Model No.	Terra Cotta Model No.	Forest Green Model No.	
Original Smoker's Cease Fire®	38 1/2" x 16 1/2"	4 gallons (15L)	FM**	26800	26800B	26800D	26800T	26800G	

** When liner is used with Original Smoker's Cease Fire®, the system is FM Approved

SAFETY CONTAINMENT SYSTEM



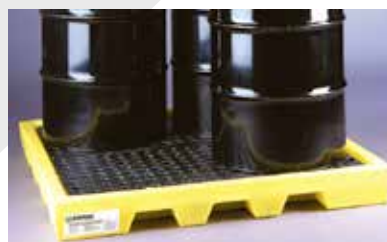
2,4,6 AND 8-Drum Workstations™

There's no need to worry about incidental spills on your factory floor, Workstations™ are easy to load with a low profile design and optional ramp. Each Workstation™ is designed for stand-alone use or can connect with other Workstations™, using link-locks™, for customized work area.

- Forkliftable when empty
- Tough, one-piece polyethylene construction that will not rust or corrode
- Low-profile Workstations™ actually become part of your factory floor, optimizing space for increased safety and efficiency
- Low-profile drip and leak protection
- Large sump capacity catches incidental spills
- Removable heavy-duty structural foam grates for easy cleaning
- Rolled-edge design helps resist cracking and warpage
- Multi-purpose Work Ramp™ hooks onto any Workstation™ for easy loading
- Link-Locks™ create a solid workspace by attaching units
- Tarps available for added protection



2-Drum Workstation™
EP-5117-YE



4-Drum Workstation™
EP-5116-YE



6-Drum Workstation™
EP-5115-YE

Workstations™

Part #	Description	Dimensions (LxWxH in.)	Weight lb. (kg)	Spill Cap. gal. (L)	Load Cap. lb. (kg)
5117-YE	2-Drum	53 x 28.5 x 6	38.2 (17.3)	22 (83.2)	2,000 (907)
5116-YE	4-Drum	53 x 53 x 6	70.5 (32)	40 (151.4)	6,000 (2,722)
5115-YE	6-Drum	77 x 53 x 6	101.6 (46)	61 (230.9)	7,000 (3,175)
5110-YE	8-Drum	100 x 53.25 x 6	163 (74)	77 (291.4)	8000 (3,629.7)

Regulations: EPA 40 CFR 264.175, SPCC, NPDES and UFC

Link-Lock™

Securely Hooks Multiple Workstations™ Together

Link and lock multiple Workstations™ together safely in a wide variety of configurations, Sold in pairs.



EP-5112-BK

Work Ramp™ & Link-Lock™

Part #	Description	Dimensions (LxWxH in.)	Weight lb. (kg)	Load Cap. lb. (kg)	Quantity
5111-BK	Ramp	46 x 25.38 x 6.13	29.8 (13.5)	1,000 (454)	
5112-BK	Link-Lock	9.5 x 7 x 3.5	3 (1.3)		1 Pair

Regulations: EPA 40 CFR 264.175, SPCC, NPDES



Secondary containment system engineered to prevent costly cleanups



2-Drum Poly-Spillpallet™ 2000 Prevents costly cleanups

This secondary containment system is engineered to meet the rigors of today's regulatory environment. Made with 100% polyethylene, it provides excellent chemical resistance. Optional drain with plug.

- Meets EPA 40 CFR 264.175
- Holds up to 2,000 lb. handling capacity
- Forkliftable
- Removable grate for easy cleaning

2-Drum Poly-Spillpallet™ 2000

Part #	Description	Dimensions LxWxH in.	Weight lb. (kg)	Spill Cap. gal. (L)	Load Cap. lb. (kg)
5253-YE	2-Drum	53.5 x 29 x 17	55.5 (25.1)	58 (219.5)	2,000 (907)
5253-YE-D	(w/drain)				

Regulations: EPA 40 CFR 264.175, SPCC and NPDES

Poly-slim-line™ 6000 Slim is in.

Poly-Slim-Line™ 6000 offers all of the same advantages as our Poly-SpillPallet™ 6000...and more! This addition to our pallet family features a low 12" profile and a handling capacity of 6000 lb. Optional drain.



Poly-slim-line™ 6000

Part #	Description	Dimensions L x W x H in.	Weight lb. (kg)	Spill Cap. gal. (L)	Load Cap. lb. (kg)
5400-YE	4-Drum	54 x 54 x 12	91 (41.4)	66 (249.8)	6,000 (2,721.5)
5400-YE-D	(w/drain)				

Regulations: EPA 40 CFR 264.175, SPCC, NPDES and UFC

SAFETY CONTAINMENT SYSTEM



The Poly-Rack™ System

The most efficient Dispensing & Storage System You can

Poly-Racker™

Featured as the base of the Poly-Rack™ System, the unique one-piece Poly-Racker™ securely holds two (2) 55-gallon drums with a large, 102-gallon spill capacity. The deep dispensing well easily holds 5-gallon pails while containing incidental spills and splashes in a ribbed bottom without contaminating the sump. Dispensing wells have scalloped edges so pails can be easily removed. Poly-Racker™ can be transported by forklift and contains two (2) standard drain plugs.



Poly-Stacker™

Combine Poly-Stacker™ and Poly-Racker™ to stack up to (4) drums with a 3000lb. load capacity. Each Poly-Stacker™ holds two (2) 55-gallon drums and can easily be stacked with a forklift. Any spills from the second level fall into the dispensing well for containment and easy clean-up. When combined, Poly-Racker™ and Poly-Stacker™ create the most efficient drum storage and dispensing system available.

Poly-Shelf™

Save money while preventing drips and spills! Increase safety and efficiency when Poly-Shelf™ is added to the Poly-Rack™ System. Easily attaches to Poly-Stacker™ and allows simultaneous dispensing from all drums. A drain hole in the bottom diverts liquids into the Poly-Racker™ dispensing well.

Poly-Racker™ and Poly-Stacker™

Part #	Description	Dimensions (LxWxH in.)	Weight lb. (kg)	Spill Cap. gal. (L)	Load Cap.lb. (kg)
6000-YE	Poly-Racker	49 x 53 x 23	105 (47.6)	102 (386.1)	3,000 (1,361)
6002-YE	Poly-Stacker	49 x 40.75 x 12.75	50 (22.7)		2,400 (1,088.6)
6003-YE	Poly-Shelf	17 x 22 x 17.5	8 (3.6)		60 (27.2)

Regulations: EPA 40 CFR 264.175, SPCC, NPDES

Enpac Storage

IBC 2000i™

Intermediate Bulk Containment Made Easy

ENPAC's® integrated IBC 2000i™ gives intermediate bulk container users more versatile spill containment. It fits more than 99% of all IBC dispensing units and features a large sump capacity of 385 gallons; more than exceeding EPA 40 CFR 264.175 regulations. The unit also comes with an integrated 5-gallon pail holder for quick and easy dispensing. The IBC 2000i™ is the only-piece, light weight, 100% polyethylene IBC spill containment unit that is forkliftable and nestable for convenient shipment and storage and it reduces shipping costs. The polyethylene construction will not rust, corrode, or have adverse reactions with chemicals. Optional drain.



Tarps include:

- Fold up working area
- Document pouch
- Durable pockets for weighted corners in harsh weather
- Adjustable corner-cinch bungees



IBC 2000i™

Part #	Description	Pedestal Dimensions in.	Ext. Dimensions in.	Weight lb. (kg)	Spill Cap. gal. (L)	Load Cap.lb. (kg)
5469-YE	2000i	56.75 x 56.75 x 29.5	73 x 80.5 x 29.5	262 (118.8)	385 (1,457)	8,000 (3,629)
5469-YE-D	(w/drain)					
5469-TARP	Tarp		76 x 80 x 73.75	14.6 (6.6)		

Regulations: EPA 40 CFR 264.175, SPCC, NPDES and UFC



Poly-overpack® 95 Salvage Drum

Enpac Poly-Overpack® 95 meets group 1 packaging standards and salvage drum regulations. Unlike competing overpacks, Poly-Overpack® 95 safely contains a wide range of hazardous materials including: acids, corrosives and damaged parts-in 55-gallon drums.

Tight, secure and leak-free container closing is simple; place any long object, like a wooden 2x4”, in the handy lid slots and turn to screw the lid down tightly. Meets performance-oriented packaging requirement of US DOT and UN regulations.

- Ideal for hazardous drum transport and storage
- Moulded for easy grip and pick-up with standard material handling equipment
- 100% UV protected polyethylene
- Nestable design for efficient storage
- Closed cell gasket in lid seals closure
- Patented castellations in lid allow for easy closing



Poly-overpack® 95 salvage drum

Part#	Top Dia. in. (cm)	Bottom Dia. in. (cm)	Ht. in. (cm)	Weight lb. (kg)	Spill Cap. gal. (L)	Load Cap. lb. (kg)
1237-YE	31.38 (80)	25.75 (65)	41.5 (105)	48 (21.8)	95 (359.6)	650 (295)

Regulations: UN 1H2/X295/S, DOT 49 CFR 173.3(c), EPA SPCC and NPDES

Poly-Overpack® 20 & 30 Salvage Drums

New 20 and 30-gallon Salvage Drums are versatile units that can directly contain solids and sludges with security. With a half turn lid, these ergonomically designed units allow for easy access, unlike competing “hoop-ring designs” that need a bolt and nut. The 20-gallon unit accepts bottles, cans, and 5-gallon pails, while the 30-gallon unit can contain up to 16-gallon drums.



Poly-Overpacks®

Part #	Description	Top Dia.in. (cm)	Bottom Dia. in. (cm)	Ht. in. (cm)	Weight lb. (kg)	Spill Cap.gal. (L)	Load Cap.lb. (kg)
1220-YE	20-Gallon	22.25 (57)	18 (46)	19 (48)	10 (4.5)	20 (75.7)	166 (75.3)
1230-YE	30-Gallon*	22.25 (57)	18 (46)	30 (76)	13 (6)	30 (113.5)	220 (100)

Regulations: UN 1H2/X75/S, UN 1H2/Y100/S, *UN 1H2/X100/S, DOT 49 CFR 173.3 (c),EPA, SPCC and NPDES